



**PARTICEPS
GLOBAL LIMITED**

from envision to reality

RC: 991011

Company Profile








Your Operational Technology Partner

Automation - Electrical - Skids - Digital - Cybersecurity





Table of Contents

About Us	
Mission & Vision	
The Particeps Advantage	
Our Services	
Our Products	
Meet the CEO	
Our Clients	



PARTICEPS ATA GLANCE

550+
Empl
Globally

30+ ontinuous
C
Years

40+
C
Served

13
Global
Locations

years

Expertise Profile

50
Delivered

10M+
Engineering
Man-Hours
V

10
0+ endo&Systems
Pr

0M+ oject Value

Solution Domains



Automation
Solutions



Electrical
Solutions



Skids and
Packages



Digital
Solutions



OT
Cybersecurity

Industry Focus

Oil & Gas

Petrochemicals

Green Energy

Utilities

Manufacturing

manuf



JAFZA, UAE: Facility, and fabrication yards



Houston, Tx: Facility, and fabrication yards



Al-Khobar, KSA: Manufacturing facility



Lagos, NG: T

About Particeps

Our Mission

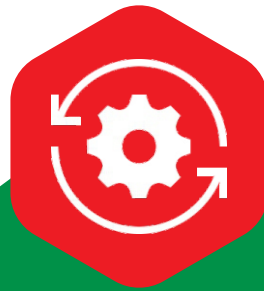
Our Vision

Our Core Values

Our core values form the bedrock of our service offerings. We are guided by:



INTEGRITY



INNOVATION



RELIABILITY



CLIENT
SATISFACTION



EXCELLENCE



SAFETY



TEAM WORK

Our Clients

We understand the dynamics of Business To Business relationships and B2Cs. Our partnerships with giants in the oil and gas industry and consistent delivery of excellent services has created trust between our clients and us.





HEAD OFFICE

Abuja Address. Plot 3140 Murtala
Mohamed Expressway, Maitama,
FCT Abuja

08098545888, 08107159935

info@particepsglobal.com


www.particepsglobal.com





**PARTICEPS
GLOBAL LIMITED**
from envision to reality

RC: 991011



Particeps Global Limited Website: www.particepsglobal.com Email: info@particepsglobal.com
Directors: Andrew Oginni (08098545888), Oluremi H. Oginni (08107159935) Nationality: All Nigerians
Abuja Address. Plot 3140 Murtala Mohamed Expressway, Maitama, FCT Abuja
Tel: 08098545888, 08107159935



FEDERAL REPUBLIC OF NIGERIA

CERTIFICATE OF INCREASE IN ISSUED SHARE CAPITAL

OF

PARTICEPS GLOBAL LIMITED

COMPANY REGISTRATION NO. 991011

The Registrar - General of Corporate Affairs Commission

hereby certifies that

pursuant to the resolution and notice of increase in share capital dated 16th (February, 2025 and presented for filing on 17th (February, 2025 in respect of the above named Company, the increase in the share capital of the company from ₦5000000 to ₦20000000 by the creation of 15000000.00 ordinary shares of ₦1 each and preference shares of ₦0 each has been registered with the Commission

Given under my hand at Abuja this 18th day of February, 2025




Hussaini Ishaq Magaji SAN
Registrar - General



It pays to pay your taxes..

TAX CLEARANCE CERTIFICATE

TCC NO : 225182450434
TAX OFFICE : MSTO ASOKORO
DATE : 2025-01-13

Name of Company : PARTICEPS GLOBAL LIMITED
RC No : 991011
Date of Incorporation : 2011-11-01
TIN : 11587390-0001
FIRS ID : 1901110010434
Business Address : TECHNOLOGY HOUSE PLOT 3140 MUR
Business Status : Commenced Business 2019-11-05



This is to certify that the above named company has rendered Income Tax, Value Added Tax, Information Technology Development Levy, Education Tax, as well as other tax returns and paid the assessed taxes in accordance with the relevant tax laws for all years including the past three assessment years as detailed hereunder.

	Assessment Year 2022	Assessment Year 2023	Assessment Year 2024
Revenue	NGN 23,554,220.00	NGN 21,645,330.00	NGN 23,887,500.00
Assessible Profit/Loss	(373,321.50)	NGN 696,110.50	NGN 2,034,709.50
Total Profit	NGN 0.00	NGN 107,596.33	NGN 678,236.50
Tax Payable	NGN 0.00	NGN 0.00	NGN 135,647.30
Tax Outstanding (If Any)	NGN 0.00	NGN 0.00	NGN 0.00

Source of Income : Wholesale on a fee or contract basis
Other Comments : Issued
This Certificate Expires on : 2025-12-31



SAMAILA AMINU
Tax Controller

Official Stamp Impression

Name & Rank of Approving Officer



0234901

Original



National Pension Commission

Pension Clearance Certificate

Employer Code PR0000991011

This is to Certify that

PARTICEPS GLOBAL LIMITED RC. No 991011

has complied with the provisions of the Pension Reform Act 2004

The details of compliance are as follows:

Description	Year..2022	Year..2023	Year..2024
Number of Employees	3	3	3
Pension Contributions Remitted to Employees RSAs (₦)	116,640.00	116,640.00	116,640.00
Sum Assured for Group Life Insurance	-	-	1,944,000.00

This certificate expires on 31 DECEMBER, 2025



Official Date Stamp Impression

Approved Signatory



No. 00000404787

NIGERIA SOCIAL INSURANCE TRUST FUND ECS CLEARANCE CERTIFICATE

ORIGINAL

Employer Registration No. **10040846118**

This is to Certify that

PARTICEPS GLOBAL LIMITED

991011

RC No

Has complied with the provisions of the Employees' Compensation ACT 2010 (ECA 2010)

The details of compliance are as follows:

Description	Year <u>N/A</u>	Year <u>N/A</u>	Year <u>2025</u>
Number of Employees	N/A	N/A	3
ECS Contribution Level	N/A	N/A	PAID

This certificate expires on 31st December, 2025



24 FEB, 2025


Approved Signature

Certificate No. ABJ/0037045



Federal Republic of Nigeria Industrial Training Fund

CERTIFICATE OF COMPLIANCE



This is to certify that PARTICEPS GLOBAL LTD
Address SKY MEMERIAL COMPLEX

Has complied with year 2024 Industrial Training Fund Contribution
in accordance with the Laws of the Federal Republic of Nigeria cap. 19 Laws
of the Federation Section 6 subsections (1), (11), (111) of 2011 as amended

REGISTRATION NO. ABJ-001-3702

RECEIPT NO. 000526527

THIS CERTIFICATE EXPIRES 31ST DECEMBER 2025

OKE ADESOLA OLAJIDE
Name and Signature
Head Revenue Inspectorate
& Compliance



Area Office Stamp



OCHOCHIE KASHAM PHOEBE
Name and Signature
Area Manager



CONNECTING THE WORLD TO ITS FUTURE



CLOUD & INFRASTRUCTURE

Design, creation and management of ICT infrastructures



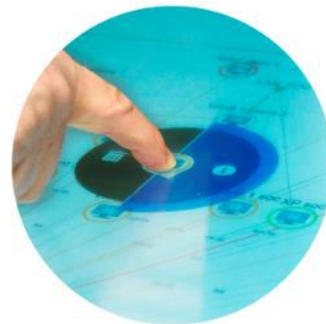
SOFTWARE

SW design and development and System Integration



DIGITAL TRUST

Document storage and Business Process Outsourcing



DATA SCIENCE

AI, Advanced Analytics, Big Data, Data Warehouse e Data Mining



CYBERSECURITY

Security for digital processes, data and information technology



CONSULTING

Full-service consultancy, from strategy to operational management.

MAIN MARKETS



**PUBLIC
ADMINISTRATION**



HEALTHCARE



**SPACE AND
DEFENSE**



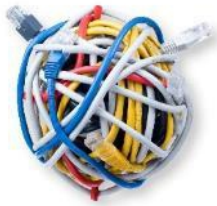
**HOMELAND
SECURITY**



INDUSTRY



TRANSPORTATION



TELECOMMUNICATION



MEDIA



FINANCE



**ENERGY
E UTILITIES**



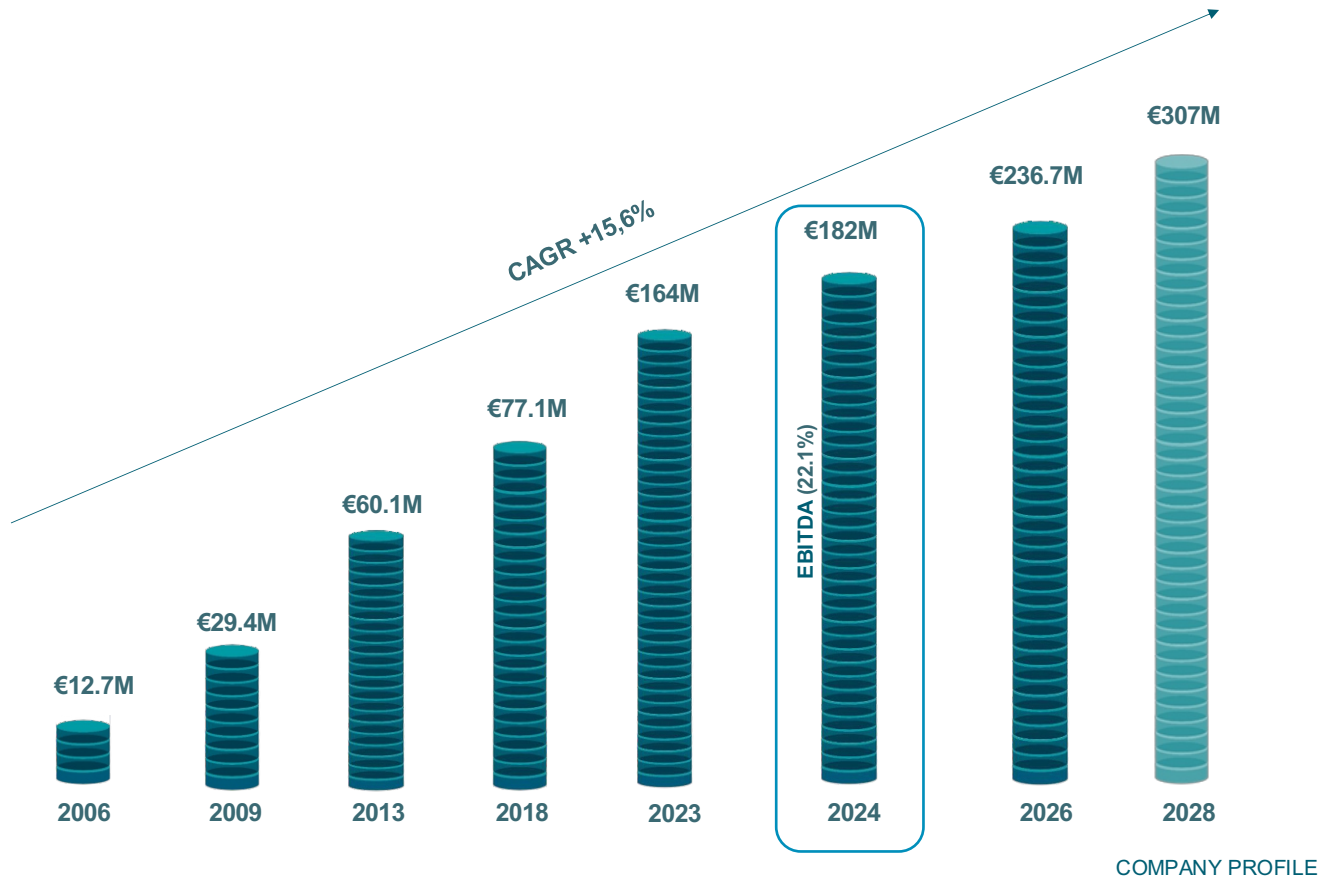
FASHION



RETAIL & GDO

GROWTH CHART

Revenues



QUALITY AND RELIABILITY ASSURANCE

PARTICEPSV TECH

THE BEST TAILOR-MADE SOLUTIONS

in the industry that are custom fit based on customers needs.

CUSTOMER-CENTRIC APPROACH

respecting the time, costs, and quality of every project all while ensuring the highest levels of safety.

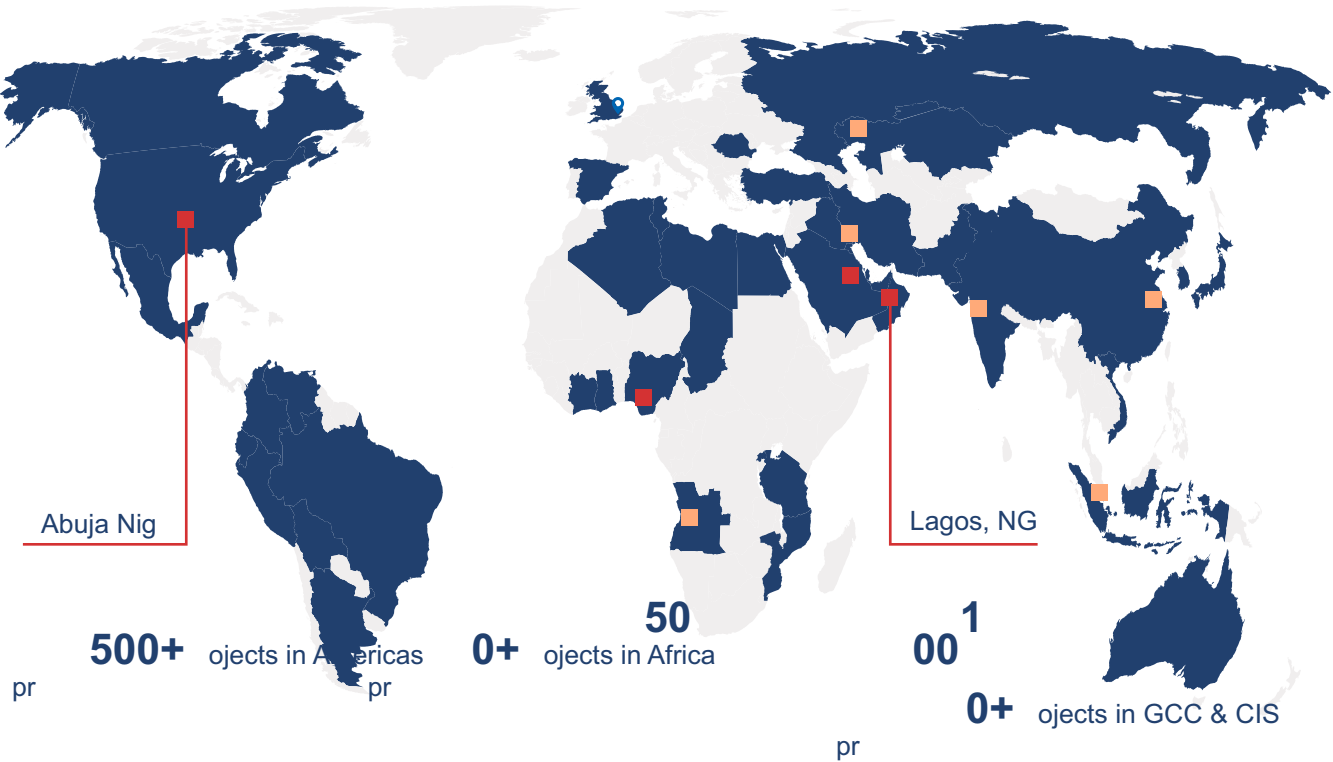
MANAGEMENT OF THE COMPLETE LIFE CYCLE

of ICT solutions: from the definition of the requirements to the systems' conception, design, implementation, installation, maintenance and evolution.

PROVEN RELIABILITY AS A PARTNER

working alongside leading national and international players.

Strategic Global Locations



About Us

PARTICEPS is a global operations technology solution provider with a rich history of delivering projects in key energy-producing regions around the world. We excel in delivering best-fit solutions with localized services for end-to-end project lifecycle coverage.

We leverage multi-disciplinary expertise fostered by assiduous in-house R&D, and strategic partnerships with technology champions to guarantee successful project execution.

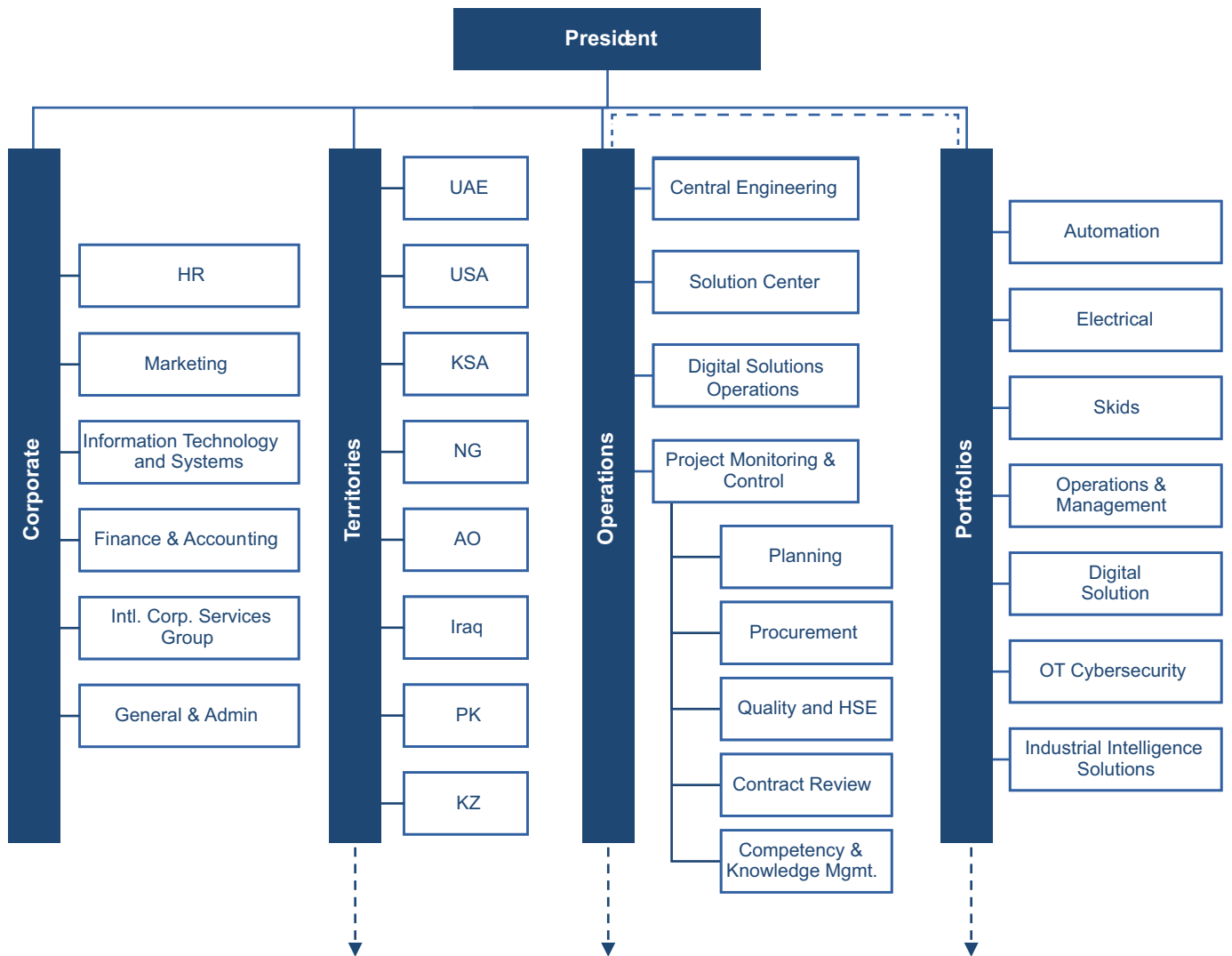
Green Energy Initiative

At PARTICEPS, we are keenly aware of the urgent challenges facing the industry in decarbonization, sustainable energy, and minimizing conversion losses. Partner with us to confidently move towards achieving climate neutrality while remaining competitive in a rapidly evolving market.

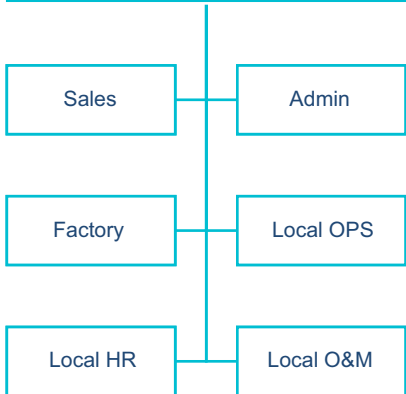


CSIA | API | ISO 9001, 27001, 14001, 45001

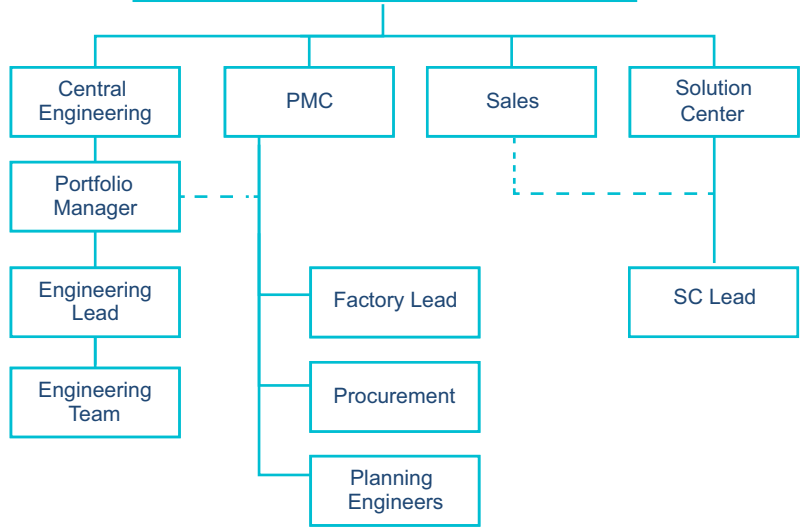
Geographical Business Units



Typical Business Unit Structure



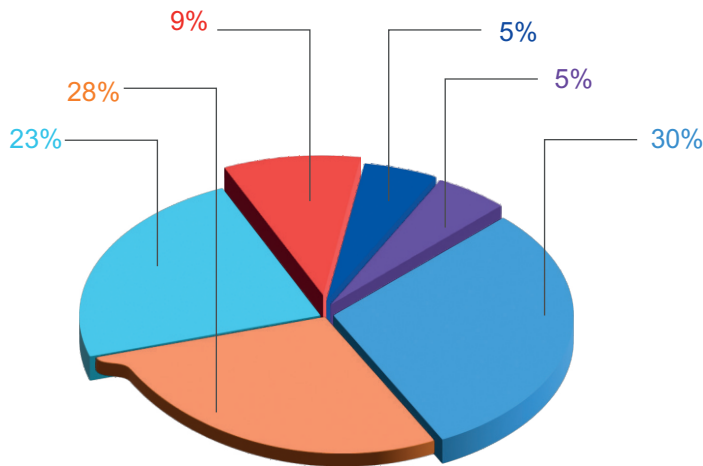
Typical Portfolio Support Structure



Engineering and Design

All employees at PARTICEPS have elaborate career paths, and training & development plans. From periodically recurring trainings to a well-defined succession plan, PARTICEPS invests heavily in the training, development, and retention of its employees, keeping them abreast of technological developments and industry practices.

Engineers at PARTICEPS go through numerous OEM-specific trainings and refresher courses each year. Each engineer goes through over 20 internal and external trainings focused on OEM/vendor systems, industry standards, third party certifications, and HSE trainings.



IloT Division	30%
Automation Engineers	28%
Control System, I&E Designers, OEM	23%
Project Controls	9%
Proposal Engineers	5%
Project Managers	5%

Typical PARTICEPS Engineer Profile

Project Managers average 15+ years of industry experience

Engineers & Designers average 8+ years of industry experience

Training and hands-on experience on at least four major OEMs' equipment

Design and Engineering lead of at least four major projects

At least 100 formal training hours per year

PMP trained and certified Project Managers

CAP and TUV certified engineer



Automation

PARTICEPS provides vendor-neutral automation solutions tailored for diverse applications in the energy industry. We cover the entire MAC scope starting from a project's concept and FEED to its integration and commissioning for both greenfield and brownfield facilities.



**Integrated
Control Systems**



**SCADA &
Virtualization**



**Turbomachinery
Controls**



**Telecom &
Auxiliary Systems**

We build rugged systems that are reliable, have high-availability, and can thrive in extreme and hazardous environments complete with certifications for compatibility.

Digital Solutions

PARTICEPS provides software-based proprietary and third-party solutions to help businesses transition into Industry 4.0. Our expertise lies in leveraging data to achieve operational excellence, allowing organizations to extract maximum value from existing data, assets, and personnel while reducing operating costs and enhancing security.



**Industrial Data &
Analytics**



**Industrial Operations
Management**

These solutions are enhanced through a large network of partner-based products and in-house software solutions.

OT Cybersecurity

PARTICEPS specializes in OT Cybersecurity to secure and protect OT systems in industrial facilities and critical infrastructure. With over 30 years of expertise in the OT domain, PARTICEPS excels at helping organizations achieve comprehensive cyber resilience and secure both their new and legacy OT systems from internal and external threats.



**OT Cybersecurity
Consultancy**



**OT Cybersecurity
Implementation**

Our solutions are based on industry standards, including NIST Cybersecurity Framework, ISO/IEC 27001, IEC 62443, and others.

Electrical Solutions

PARTICEPS provides comprehensive electrical solutions for the energy and utilities industries. We specialize in automated substations, prefabricated e-houses, and comprehensive services for electrical systems' management.



**Smart Buildings
and E-Houses**



**Energy Management
Solutions**



**Electrical Field
Services**



**Brownfield Electrical
System**

With a deep understanding of the challenges involved in delivering reliable and sustainable electrical power, we build innovative solutions tailored to project timelines and facility space constraints.

Skids & Packages

PARTICEPS provides modular, sustainable, and reusable wellsite assets to enhance operational efficiency and minimize downtime. We deliver these as fully integrated and customizable skids for multiple assets.



**Modular
Wellsite Skids**



**High-Integrity Pressure
Protection Systems**



**Analyzer
Skids**



**Metering
Skids**



**Chemical
Injection Skids**



**Wellhead
Control Panels**

Our skids and packages are built at in-house and partner fabrication facilities, and are certifiable for hazardous areas, ingress protection, and explosion proofing to multiple industrial standards.

Field Services

PARTICEPS field services are tailored to meet the needs of each facility. Our engineers possess OEM-trainings from all major vendors, get continuous skill enhancement trainings, and have extensive project experience in multiple domains.



Commissioning & Integration



Facility Surveys & Troubleshooting



Operator & Personnel Training Services



O&M Contracts

Our flexible models cover resident, rotational, on-call, and remote services to ensure that skilled professional support is available whenever needed.

Industrial Intelligence

Through many years of internal research and development, we have invented a set of proprietary software frameworks designed exclusively for the industrial operations environment. These frameworks cover everything from digital twins and data models to machine learning models and front-end software components.



PARTICEPS IIS, built on the plantOS Platform, allows enterprises to speed up their digital evolutions by:



Unifying IT, OT, and IIOT into a single framework



Providing a rich modeling environment for asset, production, logistics, and business operations



Bringing real-time business intelligence to the plant floor through a streaming analytics framework



Delivering a flexible application building environment that allows a customer to grow their use cases with increasing speed of deployment

Industrial Intelligence

Through many years of internal research and development, we have invented a set of proprietary software frameworks designed exclusively for the industrial operations environment. These frameworks cover everything from digital twins and data models to machine learning models and front-end software components.



PARTICEPS IIS, built on the plantOS Platform, allows enterprises to speed up their digital evolutions by:



Unifying IT, OT, and IIOT into a single framework



Providing a rich modeling environment for asset, production, logistics, and business operations



Bringing real-time business intelligence to the plant floor through a streaming analytics framework



Delivering a flexible application building environment that allows a customer to grow their use cases with increasing speed of deployment

Software and applications for Industry 4.0 and beyond - helping you accelerate your digital journey



Computerized Maintenance Management System (CMMS)



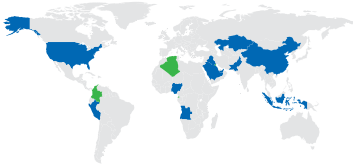
Asset Management System



EmpowerGPT

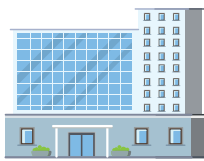
Execution Methodology

Our project execution methodology ensures that customer needs are met cost effectively while remaining within the project deadlines. The core of our expertise lies with PARTICEPS's technically competent regional teams, which are responsible for customer engagement and project management right from scope definition to the final handover. The back-end engineering oices work in tandem with regional teams to ensure that solutions are delivered as per global best practices and compliant to statutory & regulatory requirements. Our front-end engineering teams work closely with customers and vendors to stay abreast of industry trends and advancements. Our strategically located manufacturing facilities ensure speedy project delivery across the world.



Project Initiation

- Customer engagement & scope definition
- Engineering, design, project management
- Regional supply chain management



Engineering Oice

- Procurement
- Technical support and sharing global best practices



Manufacturing Facilities

- Panel manufacturing
- Internal QA and FAT
- Packaging and shipment



Project Delivery

- Installation and commissioning
- SAT
- Long-term maintenance and after-sales support

Automation Lab

PARTICEPS's competitive advantage also stems from its automation labs, used to adopt newer technologies, internal project testing, and personnel training. Over the years PARTICEPS has enhanced and developed its automation lab to cover:

R&D of state of the art technological process solutions

Building employee competency through workshops on learning and adapting to newer systems

Training customers on the various systems and resources available

Access to systems from major vendors like: SMAR, Honeywell, Rockwell, Yokogawa, Invensys, HIMA etc. to help our subject matter experts design and test best-fit solutions

Vendor Expertise



Locations



PARTICEPS is also setting up its automation labs in Iraq and Angola

Quality

PARTICEPS's success has been built on our ability to continuously improve our products and services. We ensure that our quality of service and execution for every project remains compliant to both international standards and customer-specific requirements. To ensure these standards are maintained in all our offices, the company has a comprehensive set of procedures and frameworks that monitor customer satisfaction during the project execution lifecycle.

Country Managers lead all quality related matters with assistance from regional QHSE Leads. Evaluations for project teams are tied with their feedback scores, ensuring commitment towards customer satisfaction. The root cause for any issue is marked by incorporating feedback from all the stakeholders and identifying all sources that may have caused non-compliance. Corrective actions are identified, marked and implemented with consent of all parties involved. A log of issues encountered and lessons learnt is maintained for future reference. PARTICEPS is certified by multiple international standardization bodies, and follows many more industrial standards to ensure quality.

Standards & Compliances

Safety Systems

API RP14B
API RP14C
API RP14H
IEC 61508
IEC 61511
SIF 84

Fire Systems

NFPA72
NFPA85
NFPA86
API RP14G
IEC 60331
IEC 60332

Enclosure Type

NEMA250
IEC60529

Cybersecurity

SO-27001
ISA/IEC-62443
NIST CSF

Other Bodies

MMS USCG

Hazardous Areas

API RP14J
API RP500
API RP505
IEC 60079
NEC 500/505

Classification Societies

ABS DNV

Alarm Management

EEMUA191

NRTL/ Marks

UL FM
CSA TUV
CE ATEX
BASEEFA LR

Others

IEC 61131
IEC 61000
API RP14F
EEMUA201
EEMUA189
NEC409
NEC490



Health, Safety & Environment

Health, Safety and Environment at the PARTICEPS have primary importance in every activity we perform. We are committed to deliver our projects and operational activities with no harm to employees, community, subcontractors, visitors and the environment as a whole. PARTICEPS's due diligence in maintaining and implementing the best practices and HSE procedures worldwide has ensured that our objectives of achieving international and national standards are met and exceeded.

Health Safety & Environment Record
Occupational Casualties
RWI (Restricted Work Injuries)
Tolerance on Near Misses
Occupational LTIs (Loss Time Injuries)
Environmental incidenc es

Safety Information

Year	EMR	Recordable	TRIR
2022-2023	0.67	0	0
2021-2022	0.75	0	0
2020-2021	---	0	0
2019-2020	0.08	0	0
2018-2019	0.77	0	0
2017-2018	0.78	0	0
2016-2017	0.85	0	0
2015-2016	0.84	0	0
2014-2015	0.91	0	0
2013-2014	0.87	0	0
2012-2013	0.93	0	0

INDUSTRIAL RENAISSANCE

- Platforms, solutions and services for critical infrastructures security.
- Distinctive skills and specializations at the service of people's freedom and security.
- Established partnerships with top Italian and international universities and research institutes.
- Investments in the most advanced technologies.
- International presence.



*Strong leadership in the field of ICT
and Cybersecurity to bring about a new
global technological awareness.*

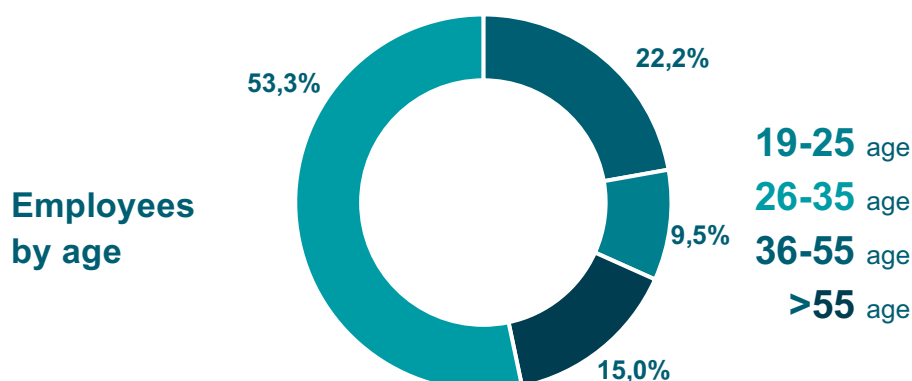
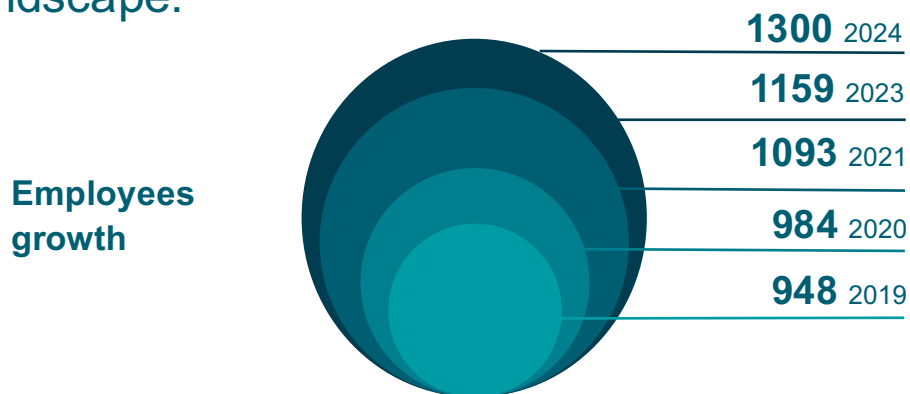
OUR TEAM

At PARTICEPS our employees are a **passion and commitment to innovation.**

Our team consists of highly skilled men and women with interdisciplinary and multidisciplinary experience reconstructing and strengthening Italy's ICT industry.

Our growth is based on a **customer-centric approach that fosters collaboration, recognition and trust.**

Our results to-date have proven our commitment to **continuous training and development** in order to gain the necessary knowledge to face the challenges of the dynamic, rapidly evolving landscape.



Security Solutions

Interact can provide End to End security, our security solution philosophy for Security solution is identifying security threats that challenge your organization and provide the appropriate solutions for them.

To this Target, we have partnered with several specialized Security vendors to provide best - of - breed solutions to our clients.

We aim to offer a variety of products and services that fit almost any budget and fulfill the needs of organizations regardless of their size.

The Perimeter Layer	The Network Layer	Host Layer	Application Layer	Data Security
Remote Access (VPN)	NAC	Host IPS	WAF	DLP
Packet Shaper	Web Proxy	Anti Malware	Dynamic App Testing	Data Classification
WAN Optimization	Content Filtering	Patch Management	Static App Testing Code Review	Database Monitoring Scanning
Mail Security	Web Filtering	I/O control	Identity & Access Management	Data Wiping Cleansing
Firewall	Wireless FW	Mobile Security		Encryption
DoS protection	VOIP Protection	DLP		MDM , EMM and UEM

Outsourcing Services

What are your business priorities, Attracting or retaining new customers?

International expansion?

Cost savings and operational efficiencies?

Our outsourcing services give you access to the specialized IT skills and capabilities you require to grow your business and have it performing at the highest levels.

Interact's Outsourcing team works with you closely and recommends tailored best-fit solutions as well as continually monitoring and reporting progress, making your business more agile, flexible and innovative.

- Security Operation Center (SOC).
- Network Operation Center (NOC).
- IT Staffing.
- IT Service Desk.
- Application Management Outsourcing (AMO).
- IT Service Management Processes Outsourcing.
- Software Development and Technical Analyst.

Benefits:

- Reduces operation overheads and controls operating costs.
- Frees up resources to focus on mission critical projects.
- Gain access to specialized skills and capabilities.
- Offloads non-core functions, redirecting personnel to core business operations.



Deployment & **Integration**

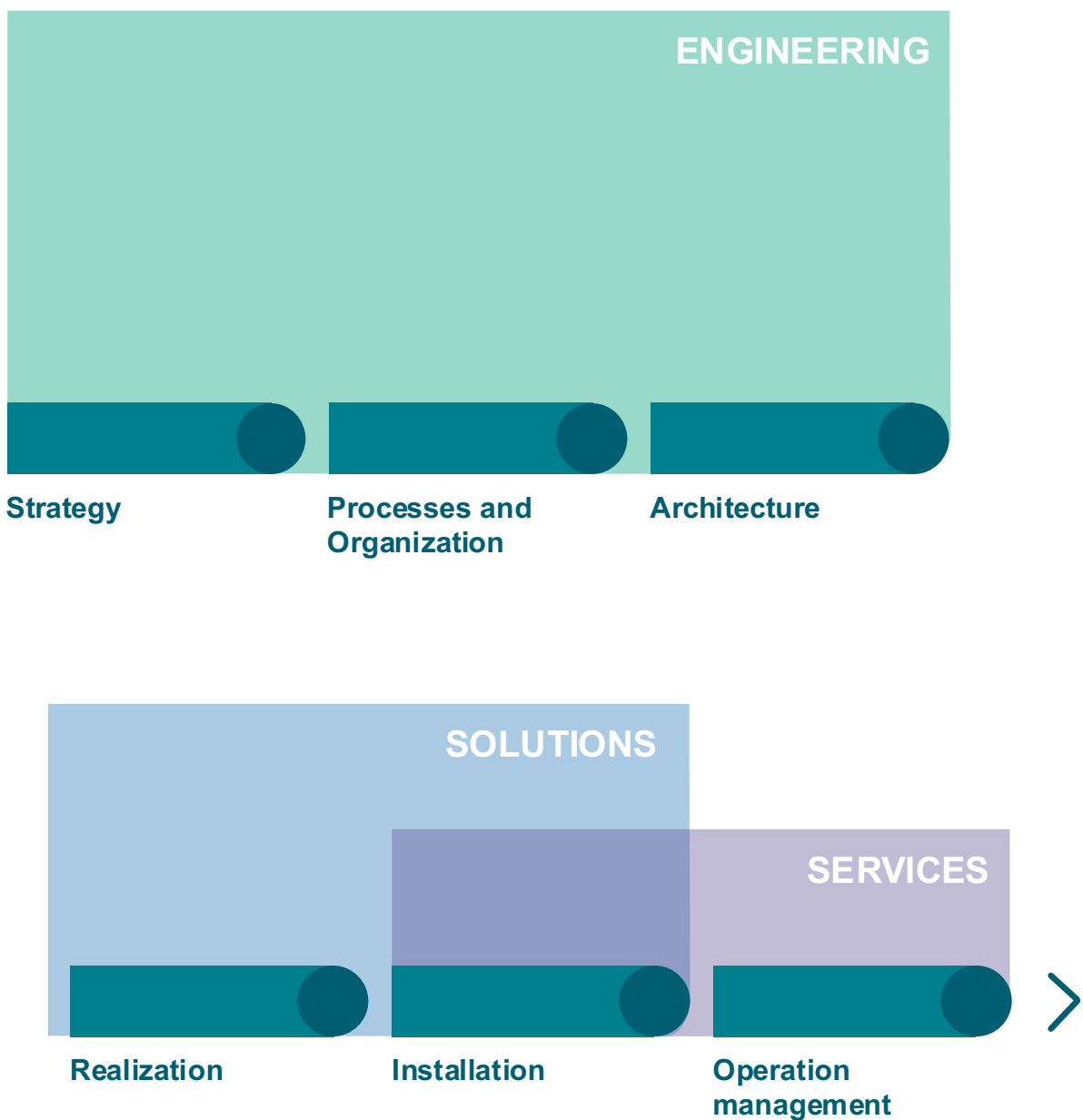
Technologies, systems and processes are important tools to achieve your business goals. In today's fast changing world, your business needs reliable expertise and experience, coupled with solid business knowledge to execute its corporate strategy.

Interact provides its customers with a variety of technical ICT services to keep them ahead of the technology curve using first class certified technical team.

- Active Directory Implementation (Single Server / separate sites)
- Active Directory Implementation (Multiple Servers on Single Site)
- Active Directory Implementation (Multiple Geographic Locations via WAN)
- Microsoft Exchange Server Update and Migration
- WSUS – Windows Server Update Services
- NAP – Network Access Protection
- WSFC - Windows Server Failover Cluster
- Active Directory Migration
- Symantec Backup Exec
- Veeam Backup for Virtual Environments
- Data Protection

FROM STRATEGY TO OPERATIONAL MANAGEMENT

From business ideas to production and design of complex information systems and infrastructures, to the operational and evolutionary maintenance.

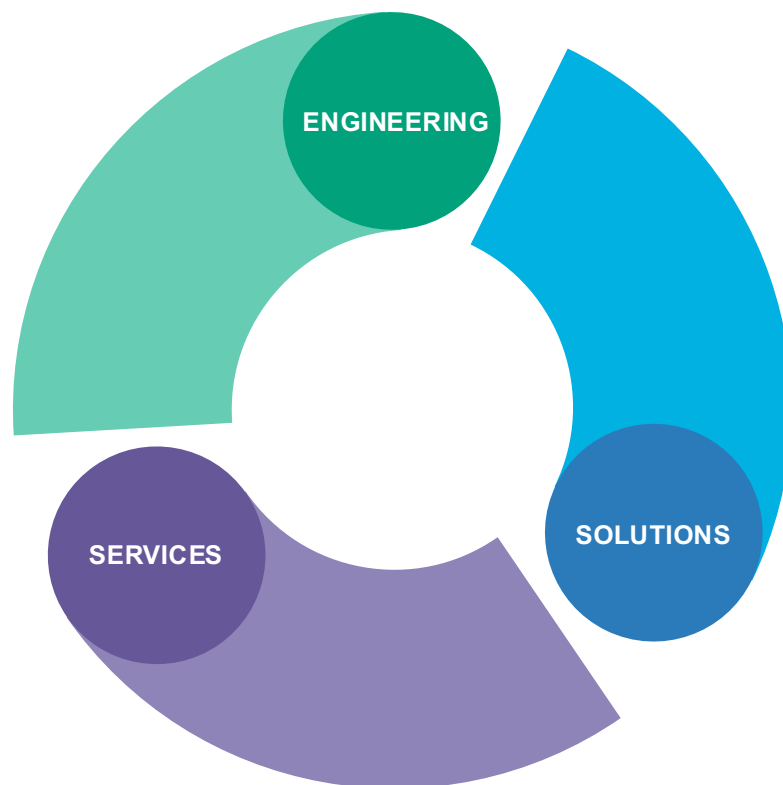


ENGINEERING, SOLUTIONS AND SERVICES

Engineering. From strategy to process development and the organization of human resources, to the design, sizing and implementation of advanced ICT technological systems and data and information security.

Solutions. Design and implementation of "turn-key" solutions (HW and SW) in the sectors of Security Networks and Infrastructures, Fraud Detection Systems, Big Data, Artificial Intelligence, Cybersecurity and Connected Care.

Services. Systems and network technical assistance and operational management. Optimization of IT and telecommunication infrastructures, centralized or distributed, with operational continuity. Management of technological infrastructures (NOC, SOC), Service Desk / Help Desk, customized devices, installation, configuration and field service in the territory.



ENGINEERING



Feasibility studies for investments in technological infrastructures and ICT systems;

Business planning, strategic positioning of customers' ICT products and services in the market;

Design of technological and application architectures;

Design of software solutions and market platforms/products;

Evaluation of investments and expected returns;

Risk Assessment & Risk Management;

ICT Advisory.



Offer Engineering;

Definition of requirements, drafting of technical specifications and management of project tenders;

Specialized consultancy focused on IT and network infrastructures;

Program and Project Management for complex projects;

Specialized technical activities on specific technologies;

System Integration Activities for Large Systems;

Business Process Engineering

Training.

SOLUTIONS

CLOUD & INFRASTRUCTURE

Architecture & Cloud

Web & Application Performance

Internet Of Things

Identity & Asset Management

Operation Automation

DIGITAL TRUST

Document Management

Business Process Outsourcing



SOFTWARE

Applications design & development

Modelling & Simulation

Blockchain

Robotic Process Automation

CYBERSECURITY

Security Operation Center

DDos Protection

App & API Protection

Cyber Range

Ransomware Protection

DATA SCIENCE

Artificial Intelligence

Big Data

Data Warehouse

Advanced analytics

CONSULTING

Definition and implementation of technological and application architectures

Tailor made support for the analysis, development, testing and delivery of networks and systems.

Digital payment systems - Monetics

SERVICES

CLOUD & INFRASTRUCTURE

Digital Transformation

Managed Services & Outsourcing

Edge Services

Service Desk

Engineering Services

Plant Installations

Digital Events

Streaming Live & VOD

SOFTWARE

Application Management

Application Maintenance

T&S Platforms

CYBERSECURITY

Managed Security Services

Assessment & Advisory

Compliance

Cybersecurity Training

Digital Forensics

CONSULTING

IT Audit & Compliance

Business Process Engineering

Complex project management

Risk Assessment & Risk Management

ICT Advisory



DIGITAL TRUST

Private Cloud for document management

PRODUCTS

BY MARKET

SPACE AND DEFENSE

SMART (Military Simulator for Realistic Shooting Training)

Decision Dashboard

T&S Systems

DIGITAL MEDIA

IWCAST

HEALTHCARE

Rhapsody

BY ACTIVITY AREA

DIGITAL TRUST

Spotlight

CLOUD & INFRASTRUCTURE

Memopal

Eco4Cloud

CYBERSECURITY

PrivateWave

IWMEET

Fraudsealer

ISMS

Deception Platform

Security Suite

Cyber Range

CERTIFICATIONS AND PARTNERSHIP

Competence and professionalism attested by over 1000 company and professional certifications, partnership and exclusive collaborations.

SYSTEM CERTIFICATIONS

ISO/IEC 27001

ISO 9001

ISO 14001

ISO/IEC 20000-1

ISO 45001

ISO 37001

ISO 50001

ISO 20121

SA 8000

UNI 11769

UNI/PdR 125

LICENSES / QUALIFICATIONS

Art.28 TULPS

DL 37/08

Bentley – Cube Dynasim

PTV Viskwalk

PARTNERSHIPS

Akamai

AWS

Checkpoint

CyberArk

CISCO

CITRIX

Crowdstrike

Dell EMC

Fortinet

Google

HP Inc.

HUAWEI

IBM

Lenovo

Microsoft

Netapp

Nutanix

Onedidentity

Oracle

Red Hat

Splunk

SUSE

Trend Micro

Veeam

Veritas

Vmware

Watchguard

Zerto

Enabling Your Business Evolution

For 30 years, PARTICEPS has been helping industrial businesses enhance process visibility, control, and reliability in their industrial plants and assets. Now, in a rapidly evolving digital world, we are here to partner with you in bringing out the best your facilities have to offer through full enterprise visibility and AI-based insights and analytics



Projects
in over 40
Countries

info@particepsglobal.com
www.particepsglobal.com

HEAD OFFICE
**Abuja Address. Plot 3140 Murtala
Mohamed Expressway, Maitama,
FCT Abuja**

Regional Offices:

Lagos

Enugu

Port Harcourt

08098545888, 08107159935